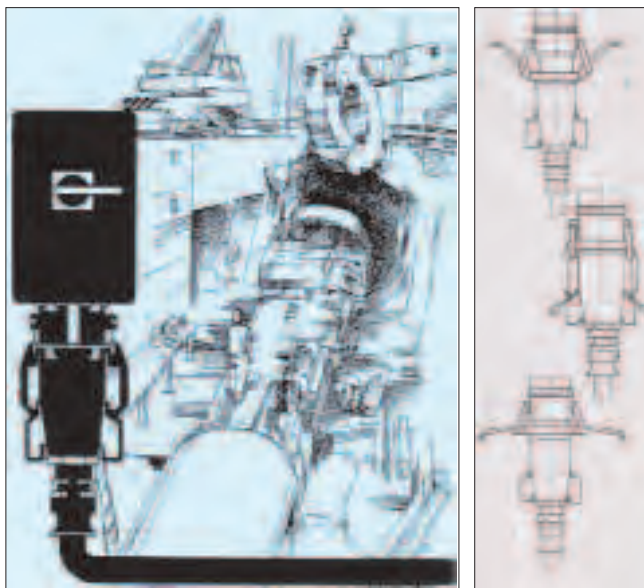


250/400A HEAVY DUTY RANGE PLUGS AND SOCKETS, max.1000V, IP657



This range of plugs and sockets are designed on the principles of CEE17 range (CEE17 only goes up to max 125A).

Plugs and sockets made of robust watertight housings of aluminium alloy, for max voltage rating of 1000V, according to IEC 60309-1+2, 1999. Suitable for the connection of powerful machines on construction sites, docks, industrial plants and underground mining. Switched wall sockets are mechanically interlocked to prevent any false operation of the switch or the plug. Unswitched devices can be fitted for the same purpose with pilot-contacts or auxiliary switches. Our high current plugs withstand hardest service conditions.

Electrical interlock

All plug-and-socket devices can be equipped with 2 pilot-contacts or 1 auxiliary switch, which opens (late make, early break) before the plug contacts are withdrawn. Pilot cables can be inserted separately into the housing. For AC and DC, according to IEC 60309-1+2,1999.

Housing:

Wall socket, plugs and coupling sockets in a robust aluminium alloy housing.

Types of enclosure:

Plugs and sockets inserted IP 657 (wall sockets with switch IP 557). For references, please see page 106.

Contact base:

Made of plastic material with high creepage current resistance.

Contact system:

Silverplated tulipshaped contacts with stainless steel springs.

Connections:

Stainless steel connection terminals permit a max. conductor cross-section of 185mm² highly flexible strand or 240mm² rigid copper conductor.

Plug Code:

A groove in the socket and the corresponding key on the plug ensure that the plug can only be inserted in the correct position.

Anticorrosion protection:

All parts are well protected against rust. Steel parts hot galvanized or stainless steel.

Mechanical interlock:

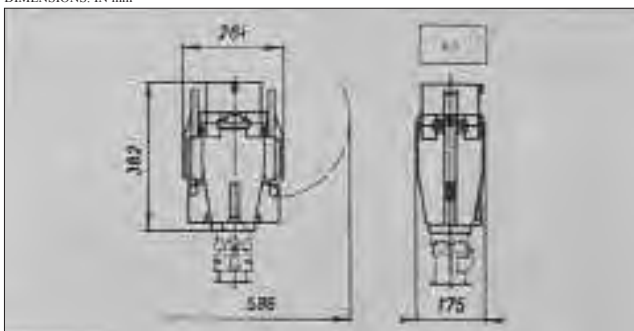
Wall sockets with switch are mechanically interlocked against undesired actuation of live contacts.

Switch cannot be operated until the plug is inserted, plug cannot be withdrawn until the switch is switched off.

Operation aid:

All plug-and-socket devices are fitted with an operation aid, to be locked by padlock.

DIMENSIONS: IN mm



250/400A HEAVY DUTY PLUG, max.1000V (ext. on principles of CEE 17)



Type	Contacts	Operating Voltage					Kg
		250V / 9h	380V / 6h	500V / 7h	660V / 5h	1000V / 1h	
JS-S4 250A	3P+E	10.220.671	10.221.671	10.222.671	10.223.671	10.224.671	8.100
JS-S5 250A	3P+N+E	10.225.671	10.226.671	10.227.671	10.228.671	10.229.671	8.600
JS-S4 400A	3P+E	10.420.671	10.421.671	10.422.671	10.423.671	10.424.671	8.100
JS-S5 400A	3P+N+E	10.425.671	10.426.671	10.427.671	10.428.671	10.429.671	8.600

Note: designs may change, see page 2

All types are available with 2 pilot contacts.