



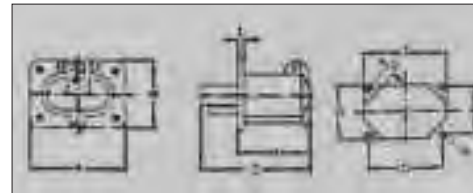
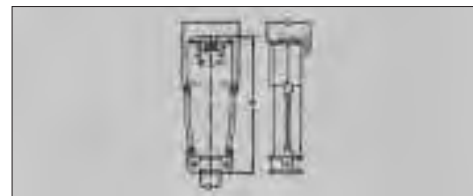
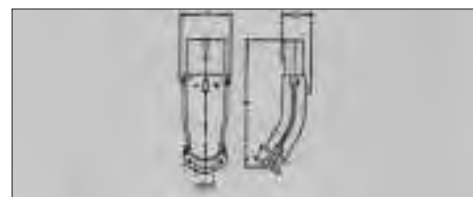
## 250A BATTERY VEHICLE PLUGS AND SOCKETS, TYPE DIN, IP44, 500V WITH 30A AUXILIARY CONTACTS - METAL

High quality standard connector for charging and powering electric vehicles.

### 2 Pole 250A 500V DC + 2 Aux 30A

Rated at 250A and 250V the 2 pole AMPCO CONNECTOR has copper alloy contacts. They are supported inside aluminium housing by Tufnol insulation blocks. Contacts may be either screwed or soldered to the cable.

The AMPCO DC CONNECTOR has brass, nickel plated contacts with the female pins fitted with multilam contacts and provides as a standard two 30A auxiliary contacts for safety circuits (late make/early break) power meters, relays or charger control units.



DIMENSIONS: IN mm

### Stock no. Plugs

Stock no.	Amp	A	B	C	S/max.
A1203	250	127	270	76	51,5

### Stock no. Connectors

On request	Amp	A	B	C	S/max.
	250	113	300	90	51,5

### Stock no. Flush-mounted Socket outlets

Stock no.	Amp	A	B	C	H	K	L	Q	R	S	T	U
A1204	250	140	100	143	50	9	8	115	75	86	120	15