



30A MULTI-PIN CONNECTORS, IP67, 24 and 37 POLE, 500V HEAVY DUTY MINING TYPE



FOR TECHNICAL DETAIL AND APPLICATION, SEE 3PV RANGE ON PAGE 67

Max. cable O.D. 62mm

| Description | Number of contacts | Cable size mm ² | Cable ø | Ref. female | Ref. male |
|----------------------|--------------------|----------------------------|---------|-------------|-----------|
| Semi-recessed socket | 24 | 6 max. | - | 331 306 | 331 313 |
| | 37 | | - | 331 293 | 331 314 |
| Straight plug | 24 | 6 max. | 32-42 | 331 307 | 331 315 |
| | 37 | | 43-54 | 331 308 | 331 294 |
| Cable connector | 24 | 6 max. | 32-42 | 331 309 | - |
| | 37 | | 43-54 | 331 310 | - |
| Appliance inlet | 24 | 6 max. | - | - | 331 311 |
| | 37 | | - | - | 331 312 |

SEMI-RECESSED SOCKET

| | A ø | B | C | D | E | F ø | Weight |
|------|-----|----|----|-----|----|-----|--------|
| 3PV4 | 105 | 55 | 75 | 116 | 92 | 11 | 1,4kg |

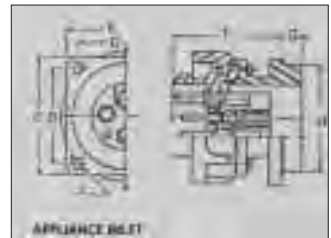
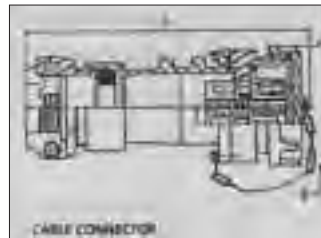
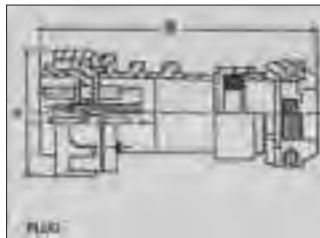
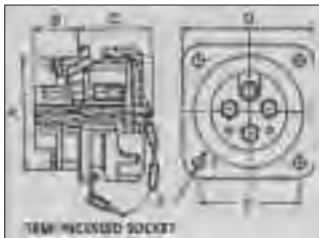
| PLUG | A ø | B | Weight |
|------|-----|-----|--------|
| 3PV4 | 305 | 132 | 2,2kg |

APPLIANCE INLET

| | A ø | B | C | D | E | F | G | H ø | Weight |
|------|-----|----|-----|----|-----|-----|----|-----|--------|
| 3PV4 | 11 | 92 | 116 | 92 | 116 | 107 | 20 | 105 | 1,6kg |

CABLE CONNECTOR

| | A | B ø | Weight |
|------|-----|-----|--------|
| 3PV4 | 305 | 132 | 2,4kg |



30A MULTI-PIN CONNECTORS, IP67, 61 POLE, 500V HEAVY DUTY MINING TYPE



FOR TECHNICAL DETAIL AND APPLICATION, SEE 3PV RANGE ON PAGE 67

Max. cable O.D. 67mm

| Description | Number of contacts | Cable size mm ² | Cable ø | Ref. female | Ref. male |
|----------------------|--------------------|----------------------------|---------|-------------|-----------|
| Semi-recessed socket | 61 | 6 max. | | 331 475 | 331 476 |
| Straight plug | 61 | 6 max. | 52-62 | 331 477 | 331 478 |
| Cable connector | 61 | 6 max. | 52-62 | 331 479 | - |
| Appliance inlet | 61 | 6 max. | | - | 331 480 |

SEMI-RECESSED SOCKET

| | A ø | B | C | D | E | F ø | Weight |
|------|-----|----|----|-----|-----|-----|--------|
| 3PV5 | 130 | 60 | 85 | 158 | 120 | 13 | 3,5kg |

| PLUG | A ø | B | Weight |
|------|-----|-----|--------|
| 3PV5 | 155 | 395 | 4,7kg |

APPLIANCE INLET

| | A ø | B | C | D | E | F | G | H ø | Weight |
|------|-----|-----|-----|-----|-----|-----|----|-----|--------|
| 3PV4 | 13 | 120 | 158 | 120 | 158 | 120 | 20 | 130 | 3,7kg |

CABLE CONNECTOR

| | A | B ø | Weight |
|------|-----|-----|--------|
| 3PV5 | 412 | 155 | 5,0kg |

