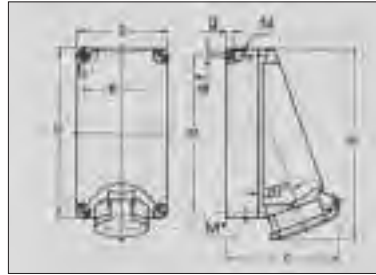
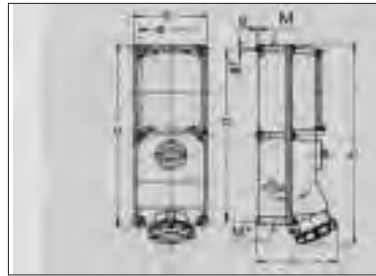


32A REFRIGERATED CONTAINER PLUGS AND SOCKETS, 380/440V >

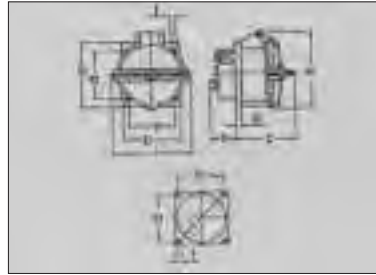
IP 67 Socket Outlet switched, with mechanical Dodsch* interlock CAT NO. 5700  *turn plug to switch on/off	Current	32	
	Poles	4	
	Dimensions (mm)	a	225
		b	118
		c	157
		d	208
		e	101
		f	6,3
		g	8
		h	269
		M	1x25 and 1x32
		M*	2x25
min. CondCross Section	mm <sup>2</sup> 2,5		
max. CondCross Section	mm <sup>2</sup> 10		
max. cable dia. in	mm 20,5		



IP 67 Socket Outlet switched, with mechanical dual interlock DIN rail CAT NO. 5946	Current	32	
	Poles	4	
	Dimensions (mm)	a	364
		b	134
		c	168
		d	347
		e	117
		f	6,3
		g	8
		h	408
		M	32/40
		M*	2x32
min. CondCross Section	mm <sup>2</sup> 2,5		
max. CondCross Section	mm <sup>2</sup> 10		
max. cable dia. in	mm 27		



IP 67 Panel Mounted Socket Outlet CAT NO. 2123	Current	32	
	Poles	4	
	Dimensions (mm)	a	85
		b	75
		c	79
		d	60
		e	60
		f	5,5
		g	4,5
		h	93
		i	101
		k	36,5
l	60		
min. CondCross Section	mm <sup>2</sup> 2,5		
max. CondCross Section	mm <sup>2</sup> 10		



IP 67 Panel Mounted Appliance Plug with hinged lid CAT NO. 2692	Current	32	
	Poles	4	
	Dimensions (mm)	a	85
		b	85
		c	139
		d	70
		e	70
		f	6,2
		g	6
		h	181
		s	93
		min. CondCross Section	mm <sup>2</sup> 2,5
max. CondCross Section	mm <sup>2</sup> 6		

