


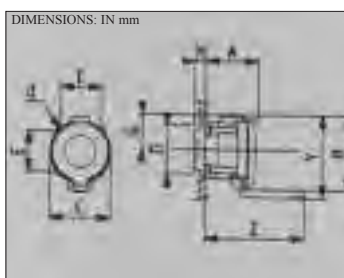





## IP67 WATERTIGHT, DISCONNECTOR PANEL MOUNT SOCKET -

A	V	 2P+E	 3P+E	 3P+N+E
16	24	3PS1D20E08	—	—
	220	3PS1D20E03	3PS1D30E03	3PS1D3NE03
	380	A1921	A1922	A1923
	660	—	3PS1D30E19	3PS1D3NE19
	250DC	3PS1D20E20	—	—
32	24	3PS3D20E08	—	—
	220	3PS8D20E03	3PS3D30E03	3PS3D3NE03
	380	A1924	A1925	A1926
	660	—	3PS3D30E19	3PS3D3NE19
	250DC	3PS3D20E20	—	—
63	24	3PS6D20E08	—	—
	220	3PS6D20E03	3PS6D30E03	3PS6D3NE03
	380	A1927	A1928	A1929
	660	—	3PS6D30E19	3PS6D3NE19
	250DC	3PS6D20E20	—	—
125	24	3PS9D20E08	—	—
	220	3PS9D20E03	3PS9D30E03	3PS9D3NE03
	380	3PS9D20E01	A1930	A1931
	660	—	3PS9D30E19	3PS9D3NE19
	250DC	3PS9D20E20	—	—
200	24	3PS2D20E08	—	—
	220	3PS2D20E03	3PS2D30E03	3PS2D3NE03
	380	3PS2D20E01	3PS2D30E01	A1933
	660	—	A1932	3PS2D3NE19
	250DC	3PS2D20E20	—	—

AMPS	A	B	C	D	d	E	G	H	Y	Z	kg
16	67	92	69	57	4,4	48	44	15	110	118	0,24
32	73	103	80	67	4,5	55	50	18	120	135	0,38
63	85	119	98	80	5,5	66	58	18	136	163	0,64
125	128	138	113	100	5,5	81	68	25	150	218	1,50
200	125	165	130	120	7	98	85	35	180	225	2,40



## IP67 WATERTIGHT, DISCONNECTOR PLUG - MOULDED

A	V	 2P+E	 3P+E	 3P+N+E
16	24	3PS1P20E08	—	—
	220	3PS1P20E03	3PS1P30E03	3PS1P3NE03
	380	A1908	A1909	A1910
	660	—	3PS1P30E19	3PS1P3NE19
	250DC	3PS1P20E20	—	—
32	24	3PS3P20E08	—	—
	220	3PS3P20E03	3PS3P30E03	3PS3P3NE03
	380	A1911	A1912	A1913
	660	—	3PS3P30E19	3PS3P3NE19
	250DC	3PS3P20E20	—	—
63	24	3PS6P20E08	—	—
	220	3PS6P20E03	3PS6P30E03	3PS6P3NE03
	380	A1914	A1915	A1916
	660	—	3PS6P30E19	3PS6P3NE19
	250DC	3PS6P20E20	—	—
125	24	3PS9P20E08	—	—
	220	3PS9P20E03	3PS9P30E03	3PS9P3NE03
	380	3PS9P20E01	A1917	A1918
	660	—	3PS9P30E19	3PS9P3NE19
	250DC	3PS9P20E20	—	—
200	24	3PS2P20E08	—	—
	220	3PS2P20E03	3PS2P30E03	3PS2P3NE03
	380	3PS2P20E01	3PS2P30E01	A1920
	660	—	A1919	3PS2P3NE19
	250DC	3PS2P20E20	—	—

Note: Disconnectors are also available with 2 additional pilot contacts (max 16A). Other voltages as per schedule are also available. All "A" numbers represent ex stock items. All other numbers are available on request.

AMPS	A	B	H	∅	kg
16	100	70	29	18	0,22
32	115	85	35	22	0,33
63	135	109	40	29	0,56
125	148	148	47	45	1,20
200	184	463	52	58	2,60

