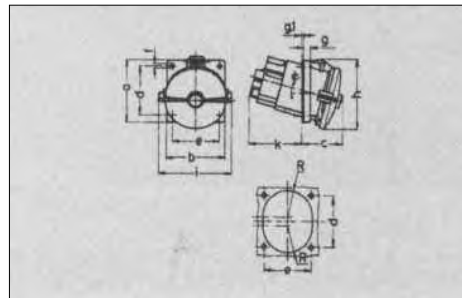


**IP67**  **WATERTIGHT, ANGLED PANELMOUNT SOCKET - MOULDED**

A	V	⊕ 2P+E	⊕ 3P+E	⊕ 3P+N+E
16	■ 230	1475	1478	1484
	■ 400	1476	1479	1485
	■ 500	—	1480	—
32	■ 230	1502	1505	1490
	■ 400	1503	1506	1551
	■ 500	—	1507	—
63	■ 230	2180	204	208
	■ 400	2181	A0310	A0312
	■ 500	—	A0311	—
125	■ 230	3575	211	215
	■ 400	—	A0313	A0315
	■ 500	—	A0314	—



Amp.	16			32			63			125	
Pole	3	4	5/7	3	4	5/7	3	4	5	4	5
Dimensions in mm	a	73,5	100	100	100	100	110	110	110	114	114
	b	64	92	92	92	92	106	106	106	110	110
	c	52	59	62	64	64	85	85	85	85	85
	d	60	85	85	85	85	85	85	85	90	90
	e	52	77	77	77	77	77	77	77	90	90
	f	5,3	5,3	5,3	5,3	5,3	6,2	6,2	6,2	6,2	6,2
	g	7	8	8	8	8	12	12	12	13	13
	g.l	2	2	2	2	2	2	2	2	2	2
	h	84	103	105	109	109	125	125	125	135	135
	i	78	85	96	103	103	117	117	117	135	135
	k	41	41	41	51	51	69	69	69	103	103
	l	52	60	65	70	70	46	46	46	47	47
	ll	60	65	72	82	82	85				
		20°	20°	20°	20°	20°	20°	20°	20°	15°	15°
min. Cross Section (mm <sup>2</sup> )		1,5	1,5	1,5	2,5	2,5	2,5	6	6	6	25
max. Cross Section (mm <sup>2</sup> )		4	4	4	10	10	10	25	25	25	70

Note: All "A" numbers represent ex stock items. All other numbers are available on request. Other voltages and straight panel mount sockets are also available on request.