

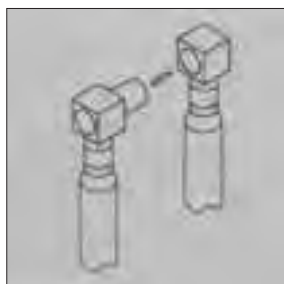
# PIGTAIL CONNECTORS

DISCONNECTS TO SHORTEN DOWNTIME AND FACILITATE QUICK, RELIABLE MAINTENANCE > RATING 600V

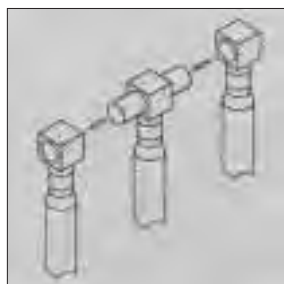
**General:**

One of the latest inventions in the connector technology has been with raised louvred edges which ensures proper contact all the time > every time. This patented connection has, as evidence further on reveals, stood all relevant emerged as a viable alternative to the bolting, taping or clamping of wires. This system takes care of hot connection workmanship, vibrations or fault level conditions while offering easy disconnect capabilities in narrow spaces such as controllers, sliprings etc.

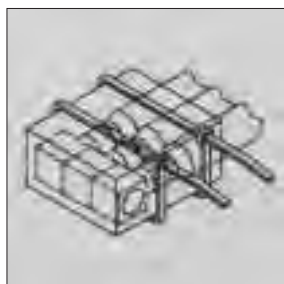
BODY SIZE	TYPE 2 WIRE MALE CONNECTOR  Cat. No.	TYPE 3 WIRE MALE CONNECTOR  Cat. No.	TYPE SINGLE FEMALE CONNECTOR  Cat. No.	COLOUR	WIRE SIZE		AMPERAGE RATING		FERRULE OF PIGTAIL CONNECTORS DIMENSIONS		LOCAL LUGS/ FERRULE CONNECTORS		COPPER CONDUCTOR NON-FLEXIBLE	COPPER CONDUCTOR FLEXIBLE CLASS 5	INSULATION BOOT SIZE 2 WIRE CONNECTOR	INSULATION BOOT SIZE 3 WIRE CONNECTOR
					AWG	mm <sup>2</sup>	Body size A	Wire size A	O.D. mm G	I.D. mm H	O.D. mm	I.D. mm	O.D. mm	O.D. mm	Cat. No.	Cat. No.
0	P8130 MD1614M>0	>	P8170 MDF1614 F>0	blue	16>14	1,5	25	25	3,5	1,8	3,7	1,8	1,64	1,8	P8190 MD BOOT>0	>
1	P8131 MD1614M>1	>	P8171 MD1614 F>1	blue	16>14	1,5	104	25	3,5	1,8	3,7	1,8	1,64	1,8	P8191 MD BOOT>1	>
1	P8132 MD1210 M>1	P8152 M2D 1210 M>1	P8172 MD1210 F>1	yellow	12>10	2,5/4/6	104	57	5,68	3,58	5,5	3,8	2,12/2,61/3,2	2,2/2,8/3,4	P8191 MD BOOT>1	P8195 M2D BOOT>1
2	P8133 MD1210 M>2	P8153 M2D 1210 M>2	P8173 MD1210 F>2	yellow	12>10	2,5/4/6	170	57	5,68	3,58	5,5	3,8	2,12/2,61/3,2	2,2/2,8/3,4	P8192 MD BOOT>2	P8196 M2D BOOT>2
1	P8134 MD 8M>1	P8154 M2D 8 M>1	P8174 MD 8 F>1	red	8	10	104	78	6,83	4,59	6,2	4,5	3,99	4,4	P8191 MD BOOT>1	P8195 M2D BOOT>1
2	P8135 MD 8 M>2	P8155 M2D 8 M>2	P8175 MD 8 F>2	red	8	10	170	78	6,83	4,59	6,2	4,5	3,99	4,4	P8192 MD BOOT>2	P8196 M2D BOOT>2
1	P8136 MD 6 M>1	P8156 M2D 6 M>1	P8176 MD 6 F>1	blue	6	16	104	104	7,82	5,76	7,1	5,4	5,16	5,8	P8191 MD BOOT>1	P8195 M2D BOOT>1
2	P8137 MD 6 M>2	P8157 M2D 6 M>2	P8177 MD 6 F>2	blue	6	16	170	104	7,82	5,76	7,1	5,4	5,16	5,8	P8192 MD BOOT>2	P8196 M2D BOOT>2
2	P8138 MD 4 M>2	P8158 M2D 4 M>2	P8178 MD 4 F>2	grey	4	25	170	137	9,52	7,23	8,8	6,8	5,95	7,0	P8192 MD BOOT>2	P8196 M2D BOOT>2
2	P8139 MD 2 M>2	P8159 M2D 2 M>2	P8179 MD 2 F>2	brown	2	25	170	137	10,41	7,67	8,8	6,8	5,95	7,0	P8192 MD BOOT>2	P8196 M2D BOOT>2
3	P8140 MD 2 M>3	P8160 M2D 2 M>3	P8180 MD 2 F>3	brown	2	25	365	137	10,41	7,67	8,8	6,8	5,95	7,0	P8193 MD BOOT>3	P8197 M2D BOOT>3
2	P8141 MD 1 M>2	P8161 M2D 1 M>2	P8181 MD 1 F>2	green	1	35	170	170	11,86	9,16	10,6	8,2	7,0	8,2	P8192 MD BOOT>2	P8196 M2D BOOT>2
3	P8142 MD 1 M>3	P8162 M2D 1 M>3	P8182 MD 1 F>3	green	1	35	365	170	11,86	9,16	10,6	8,2	7,0	8,2	P8193 MD BOOT>3	P8197 M2D BOOT>3
3	P8143 MD 10 M>3	P8163 M2D 10 M>3	P8183 MD 10 F>3	pink	1/0	50	365	210	13,23	10,05	12,4	9,5	8,15	8,8	P8193 MD BOOT>3	P8197 M2D BOOT>3
3	P8144 MD 20 M>3	P8164 M2D 20 M>3	P8184 MD 20 F>3	black	2/0	70	365	260	13,23	11,30	14,7	11,2	9,79	11,2 to 11,8	P8193 MD BOOT>3	P8197 M2D BOOT>3
3	P8145 MD 30 M>3	P8165 M2D 30 M>3	P8185 MD 30 F>3	orange	3/0	95	365	310	16,12	12,85	17,4	13,5	11,54	12,9 to 13,2	P8193 MD BOOT>3	P8197 M2D BOOT>3
3	P8146 MD 40 M>3	P8166 M2D 40 M>3	P8186 MD 40 F>3	purple	4/0	120	365	365	17,88	14,35	19,4	15,0	12,96	14,8	P8193 MD BOOT>3	P8197 M2D BOOT>3



Two wire male and female connectors



Three wire male and female connectors



Insulation boot after fitting

- 1) When selecting male and female Pigtail connectors to your wire size, ensure that they are of the same body
- 2) In a 3 wire male connector choice, ensure that the amperage of the on line wire matches the amperage requirement of the 2 off load single female connectors
- 3) Operating voltage 600V (higher, on request). Max. operating temperature 90°.
- 4) Match insulation boot size to Pigtail connector body. Protect connection against moisture and dirt by sealing boot with boot sealing compound type MD BOOT>SEAL secure boot with TRAIL ties.
- 5) All test results are related to tests as determined by size.