



AMPCO® EURONORM ECONOMY RANGE

GENERAL INFORMATION ON ALL AMPCO® EURONORM WALL SOCKETS

The Ampco-Euronorm switched and double interlocked wall socket consists of an Amplast housing which is a low toxic and flame retardant material. The unit is waterproof and therefore safe for outdoor installation. The socket is suitable for through wiring and fixing holes for extra terminals are provided. Socket base has 20/25/32mm entry holes respectively, two at the bottom and one at the top. This can be changed to two entries at the top and one at the bottom, if required. The very low constructed bottom housing allows the electrician ample space to terminate the cable and connect the wires.

Due to the internal mounting holes several sockets can be mounted next to each other without distance between them. As stipulated by the various specifications mentioned above, the mechanical interlocking will prevent plugging in or unplugging under load conditions.

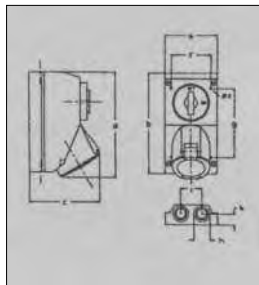
CEE AMPCO® round plugs and sockets prevent connection with incorrect polarity or to incorrect systems in accordance with CEE 17, IEC 60309-1+2, 1999.

The rated (operating) voltage of AMPCO® round plugs and sockets is indicated by a colour code. This colour code complies with the recommendation of IEC 60309-1+2, 1999.

For the enclosure we chose electric-grey RAL 7035 as a standard colour. For the switchknob and the flap the code colour applies.

IP44 ▲ SPLASHPROOF, DUAL INTERLOCKED SWITCH SOCKETS, ECONOMY RANGE, TYPE EURONORM - MOULDED

A	V	⊕ 2P+E	⊕ 3P+E	⊕ 3P+N+E
16	■ 230	A3001	—	—
	■ 400	—	A3002	A3004
	■ 500	—	A3003	A3005
32	■ 230	A3006	—	—
	■ 400	—	A3007	A3009
	■ 500	—	A3008	A3010



DIMENSION TABLE											WIRE SIZE min/max mm ²	SWA CABLE GLAND SIZE	SWA CABLE core x mm ²	
in mm														
POLES	a	b	c	d	e	f	g	h	i	k				
	16A	2P+E	100	190	120	190	5	76	130	30	40	21	0.75/2.5	0
3P+E		100	190	125	190	5	76	130	30	40	21	0.75/2.5	0	4x1.5
3P+N+E		100	190	130	200	5	76	130	30	40	21	0.75/2.5	0	5x1.5
32A	2P+E	100	190	130	200	5	76	130	30	40	21	1/6	1	3x4
	3P+E	100	190	130	200	5	76	130	30	40	21	1/6	1	4x4
	3P+N+E	100	190	135	200	5	76	130	30	40	21	1/6	1	5x4

NOTE: In cases where more than one socket is fed from same cable, i.e. loop in-loop out, maximum cable gland size is No. 2

NOTE: also available with surge protection option!

IP67 ▼▼ WATERTIGHT, DUAL INTERLOCKED SWITCH SOCKET –

A	V	⊕ 2P+E	⊕ 3P+E	⊕ 3P+N+E
16	■ 230	A0617	—	—
	■ 400	—	A0620	A0619
	■ 500	—	A0622	A0664
32	■ 230	A0642	—	—
	■ 400	—	A0621	A0613
	■ 500	—	A0665	A0616

IP67 ▼▼ WATERTIGHT, DUAL INTERLOCKED SWITCH SOCKET WITH ISOLATOR,

A	V	⊕ 3P+E	⊕ 3P+N+E	
63	■ 400	A3101	A3102	2,0
	■ 500	A3103	A3104	2,0

Pictures and dimensions on page 32

Features

- One top and two bottom entries (32mm) (Entries can be reversed)
- Protection class (IPX7 Outdoor use)
- Mechanical interlocking
- Lockable with padlock in off position in accordance with the MOS Act No. 6-1983 as amended (padlock optional)
- The housing consists of AMPLAST, a thermo plastic material, combining shape consistency with excellent electrical insulation properties. AMPLAST is low toxic, flame retardant and highly resistant to abrasion, heat, frost, ageing, oil, petrol and sea water. It is tough, dimensionally stable and virtually unbreakable.
- Compact switch, switching capacity according to:
AC21 63A
AC23 37kW at 380V
30kW at 500V
- All contacts are manufactured of brass and female contacts are spring loaded for better heat dissipation.
- Inserts made of plastic and are virtually unbreakable.
- Mounting dimensions given at bottom of enclosure.
- Competitive pricing due to local manufacture.
- Packing: 1 off socket per carton (plug not included).