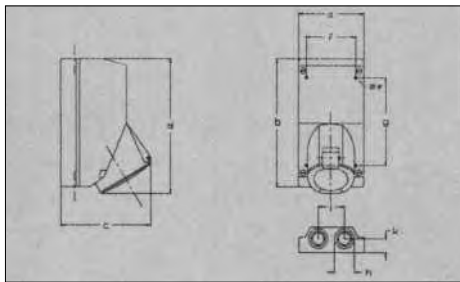


IP44 ▲ SPLASHPROOF PLUG, SURFACE MOUNTED SOCKET OUTLETS. THROUGH WIRE TYPE - MOULDED

A	V	⊕ 2P+E	⊕ 3P+E	⊕ 3P+N+E
16	■ 230	A3011	—	—
	■ 400	—	A3012	A3013
	■ 500	—	A3014	ON REQUEST
32	■ 230	A3015	—	—
	■ 400	—	A3016	A3017
	■ 500	—	A3018	ON REQUEST



DIMENSION TABLE											WIRE SIZE min/max mm ²	GLAND SIZE	SWA CABLE core x mm ²	
in mm														
POLES	a	b	c	d	e	f	g	h	i	k				
16A	2P+E	100	190	120	190	5	76	130	30	40	21	1/10	0	3x1,5
	3P+E	100	190	125	190	5	76	130	30	40	21	1/10	0	4x1,5
	3P+N+E	100	190	130	200	5	76	130	30	40	21	1/10	0	5x1,5
32A	2P+E	100	190	130	200	5	76	130	30	40	21	1/10	1	3x4
	3P+E	100	190	130	200	5	76	130	30	40	21	1/10	1	4x4
	3P+N+E	100	190	135	200	5	76	130	30	40	21	1/10	1	5x4

NOTE: In cases where more than one socket is fed from same cable, i.e. loop in-loop out, maximum cable gland size is No. 2

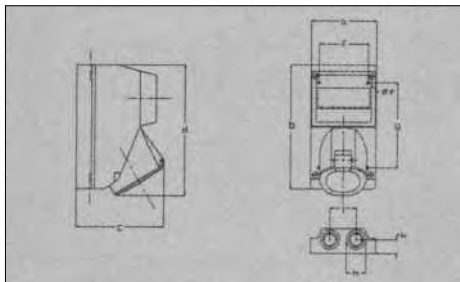
This unit is especially designed for throughwiring where ample room is a prerequisite and similar unswitched sockets would not provide this feature. The very low constructed bottom housing allows the electrician ample space to terminate several cables and use the wall socket as a distribution box.

Weight kg each	3 x 16A	0,65
	4 x 16A	0,66
	5 x 16A	0,68
	3 x 32A	0,73
	4 x 32A	0,79
5 x 32A	0,90	

NOTE: In cases where more than one socket is fed from same cable, i.e. loop in-loop out, maximum cable gland size is No. 2

IP44 ▲ SPLASHPROOF PLUG, SURFACE MOUNTED SOCKET OUTLETS. WITH TRANSPARENT WINDOW - MOULDED

A	V	⊕ 2P+E	⊕ 3P+E	⊕ 3P+N+E
16	■ 230	A3020	—	—
	■ 400	—	A3021	A3022
	■ 500	—	A3023	—
32	■ 230	A3024	—	—
	■ 400	—	A3025	A3026
	■ 500	—	A3027	—



DIMENSION TABLE											WIRE SIZE min/max mm ²	GLAND SIZE	SWA CABLE core x mm ²	
in mm														
POLES	a	b	c	d	e	f	g	h	i	k				
16A	2P+E	100	190	120	190	5	76	130	30	40	21	1/10	0	3x1,5
	3P+E	100	190	125	190	5	76	130	30	40	21	1/10	0	4x1,5
	3P+N+E	100	190	130	200	5	76	130	30	40	21	1/10	0	5x1,5
32A	2P+E	100	190	130	200	5	76	130	30	40	21	1/10	1	3x4
	3P+E	100	190	130	200	5	76	130	30	40	21	1/10	1	4x4
	3P+N+E	100	190	135	200	5	76	130	30	40	21	1/10	1	5x4

NOTE: In cases where more than one socket is fed from same cable, i.e. loop in-loop out, maximum cable gland size is No. 2

This unit comes with a transparent hood. On the inside a "C" rail is provided to incorporate a circuit breaker or earthleakage. Note: socket will be supplied empty. Customer must supply his own protection equipment.

Weight kg each *	3 x 16A	0,65
	4 x 16A	0,66
	5 x 16A	0,68
	3 x 32A	0,73
	4 x 32A	0,79
5 x 32A	0,90	

* Weight without equipment

NOTE: In cases where more than one socket is fed from same cable, i.e. loop in-loop out, maximum cable gland size is No. 2