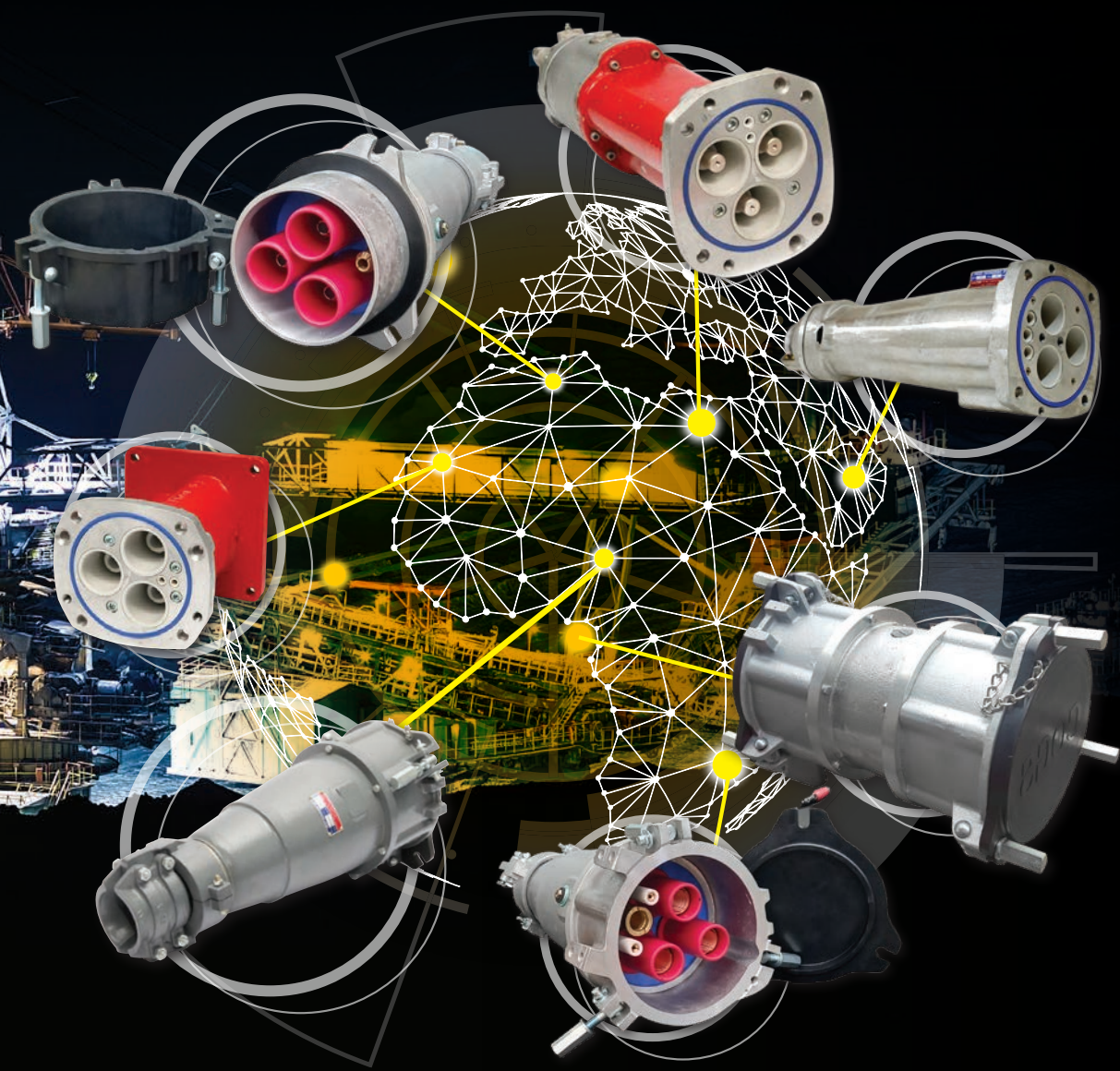


POWERMITE

**SURFACE
MINING SOLUTIONS**

AMPCO



Connecting Africa

a member of the **Hudaco** group

366 200A 6.6kV PLUGS and SOCKETS

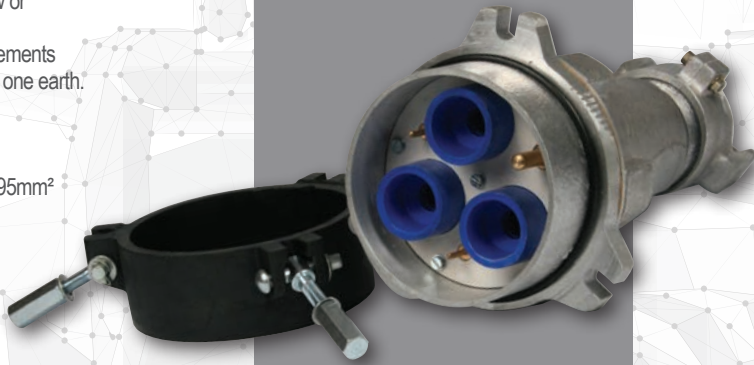


PLUGS & SOCKETS

- Contacts are sweated, no grub screw or crimp type connectors
- Contacts drilled to suite cable requirements
- Contact pins: 3-Phase connection & one earth. Up to 3 pilots (optional)
- Insulator: Silicone or Teflon
- IP67 rated & corrosion resistant
- Maximum cable diameter 76mm or 95mm²
- Maximum conductor size: 14mm
- Plug & socket rated at 6.6kV 200A
- Quick-Release mechanism (quick-thread available on request)
- Optional epoxy powder coating

Electrical Characteristics

- Dry lighting impulse 27kV (Test report: HV/100289B)
- Phase-to-phase 15kV
- Phase-to-earth 8.6kV



Features and Benefits

- Flexible silicone insulators that can be individually replaced (Teflon Hard type insulators on request)
- Lightweight aluminium design
- Maximum cable OD: 95sqmm
- Grommets cut to suite cable OD
- Quick-release mechanism (easy coupling)
- Stainless steel pilots: Prevent bending during coupling 6000 Volt 200A rated
- New split insulator for ease of assembly
- Guide pin to assist with fitment



Applications

- Primarily used in opencast applications
- Power supply to rock drills & shovels
- Used with flexible mining cable (similar to Texoprene TRM cable)

415 / 515 500A 15kV MALE PLUGS

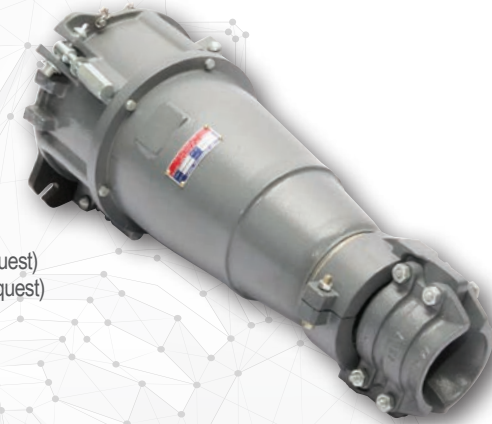


MALE PLUGS

- Conductors: Crimped
- Contacts drilled to suite cable requirements
- Contact pins: 3-Phase connection & one earth
- Up to 4 pilots (optional)
- Insulators: Silicone or Teflon
- IP54 rated & corrosion resistant
- Maximum cable diameter (415 unit): 90mm
- Maximum cable diameter (515 unit): 100mm
- Maximum 240sq mm
- Maximum conductor size: 22mm
- Plug & socket rated at 15kV 500A
- Double key system for increased safety (available on request)
- Quick-Release mechanism (quick-thread available on request)
- Optional epoxy powder coating

Electrical Characteristics

- Dry lighting impulse 55kV (Test report: HV/100289A)
- Phase-to-phase 32kV
- Phase-to-earth 17kV



Features and Benefits

- Flexible silicone insulators that can be individually replaced
- Lightweight aluminium design
- Rear grommets cut to suite cable OD
- Stainless steel pilots: Prevent bending during coupling
- 15000 Volt 500A rated
- Guide pin for ease of fitment



Applications

- Primarily used in opencast applications
- Power supply to rock drills & shovels
- Used with flexible mining cable (similar to Texoprene TRM cable)



415 / 515 500A 15kV FEMALE PLUGS

RESTRAINED PLUG

- Conductors: Crimped
- Contacts drilled to suite cable requirements
- Contact pins: 3-Phase connection & one earth
Up to 4 pilots (optional)
- Insulators: Silicone or Teflon
- IP65 rated & corrosion resistant
- Maximum cable diameter (415 unit): 90mm
- Maximum cable diameter (515 unit): 100mm
- Maximum 240sq mm
- Maximum conductor size: 22mm
- Plug & socket rated at 15kV 500A
- Quick-Release mechanism (quick-thread available on request)
- Optional epoxy powder coating

Electrical Characteristics

- Dry lightning impulse 55kV (Test report: HV/100289A)
- Phase-to-phase 32kV
- Phase-to-earth 17kV



Features and Benefits

- Flexible silicone insulators that can be individually replaced
- Lightweight aluminium design
- Rear grommets cut to suite cable OD
- Stainless steel pilots: Prevent bending during coupling
- 15000 Volt 500A rated
- Guide pin for ease of fitment

Applications

- Primarily used in opencast applications
- Power supply to rock drills & shovels
- Used with Texoprene flexible mining cable

400A 22kV & 800A 11kV HALF COUPLER / ADAPTOR and KIT



- Complete phase segregation, no phase-to-phase failures
- Conductors: Crimped, grub screw or crimp type connectors
- Designed to enhance customer usage & improved safety (solid cage design)
- Each pin has three grub screws for clamping the conductors
- Housing: Aluminium
- Main contact pins: Solid copper; Pilot pins: Solid brass
(These can be drilled out to suite the size of the conductors being used)
- The unit is electrically homogeneous to the cable when terminated
- Three Insulators made from specialised insulation material
- Silicon connecting sleeves contains self extinguishing agents to eliminate partial discharge
- Optional epoxy powder coating



Tests Conducted

- High voltage withstand test 50kV at 50Hz for 1 min
- Lightning impulse test - 125kV 10 positive & 10 negative
- Temperature rise: 400A
- Tension test: Gland (Report GA01B92007)
- Tension test: Contact assembly (Report GA01B92014)
- Through fault test 20Ka for 1 sec (Report 794/8405/H37)
- Overpressure voltage test on insulators - 60kV
- Optional epoxy powder coating

400A 25kv Unit



Features and Benefits

- Front flange easily removable if damaged (800A only)
- Individually screened phases
- Lightweight aluminium design
- Maximum cable OD: 240sqmm
- Rear grommets cut to suite cable OD
- Silicone connection tubes for improved insulation
- Solid body or split unit
- Up to 3 auxiliary pins available (excluding earth)

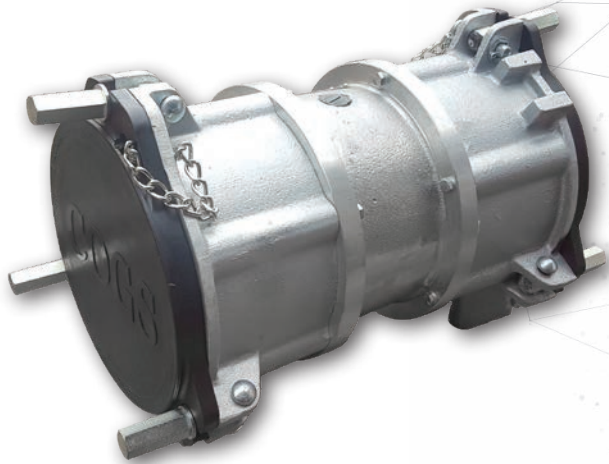
Applications

- Primarily used in opencast and tunneling applications
- Power supply to TBM's and draglines
- Used with flexible mining cable (such as our Texoprene TRM cable or SWA cable)

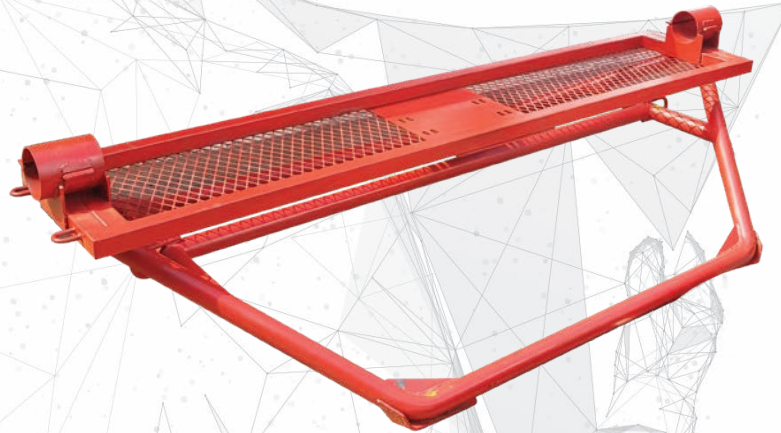
SURFACE MINING COUPLER POINT SKID



JANUS COUPLER



SURFACE MINING SKID



SKID and JANUS COUPLER



Head Office

+27 11 271 0000
info@powermite.co.za

Witbank

+27 13 692 3448/9
powermite.witb@powermite.co.za

Cape Town

+27 21 951 1505
powermite.ct@powermite.co.za

Rustenburg

+27 14 592 2209
powermite.rburg@powermite.co.za

Richards Bay

+27 35 751 1213/6
powermite.rbay@powermite.co.za

Pinetown

+27 31 700 6830/4
powermite.dbn@powermite.co.za



After Sales Service Solutions

- Coupler repair services (available on request)
- Spares locally manufactured (ex-stock)
- Technical back-up and support 24/7
- Termination of the cable into the coupler (available on request)
- Training on terminating the coupler (available on request)

AMPCO

AZOLITE
HAZARDOUS LIGHTING SYSTEMS

PROOF
MINING SOLUTIONS

AMPgland

www.powermite.co.za