

CEE Flanged Sockets Straight

230V~

400V~

500V~

50/60Hz
3p=6h
4p+5p=9h

50/60Hz
3p=9h
4p+5p=6h

50Hz
7h
4p=7h



Flanged Socket Straight

flange 75 x 75 - fixing center 60 x 60



Flanged Socket Straight

flange 75 x 75 - fixing center 60 x 60



Flanged Socket Straight
Includes "Pilot Contact"

POWER TWIST

flange 100 x 100 - fixing center 80 x 80



Flanged Socket Straight
Includes "Pilot Contact"

POWER TWIST

flange 100 x 100 - fixing center 80 x 80



Flanged Socket Straight
Includes "Pilot Contact"

POWER TWIST

flange 120 x 120 - fixing center 100 x 100

AMP	POLES	IP	Technical Pg.*	Cat.No.	Cat.No.	Cat.No.
16	3	44	36-A	A313-6f7	A313-9f7	A313-7f7
16	4	44	36-A	A314-9f7	A314-6f7	A314-7f7
16	5	44	36-A	A315-9f7	A315-6f7	A315-7f7
32	3	44	36-A	A323-6f7	A323-9f7	A323-7f7
32	4	44	36-A	A324-9f7	A324-6f7	A324-7f7
32	5	44	36-A	A325-9f7	A325-6f7	A325-7f7
16	3	67	36-B	A3132-6	A3132-9	A3132-7
16	4	67	36-B	A3142-9	A3142-6	A3142-7
16	5	67	36-B	A3152-9	A3152-6	A3152-7
32	3	67	36-B	A3232-6	A3232-9	A3232-7
32	4	67	36-B	A3242-9	A3242-6	A3242-7
32	5	67	36-B	A3252-9	A3252-6	A3252-7
63	3	44	36-C	A33351-6	A33351-9	A33351-7
63	4	44	36-C	A33451-9	A33451-6	A33451-7
63	5	44	36-C	A33551-9	A33551-6	A33551-7
63	3	66/67	36-D	A3335-6	A3335-9	A3335-7
63	4	66/67	36-D	A3345-9	A3345-6	A3345-7
63	5	66/67	36-D	A3355-9	A3355-6	A3355-7
125	3	66/67	36-E	A3435-6	A3435-9	A3435-7
125	4	66/67	36-E	A3445-9	A3445-6	A3445-7
125	5	66/67	36-E	A3455-9	A3455-6	A3455-7

Conduit mounting box



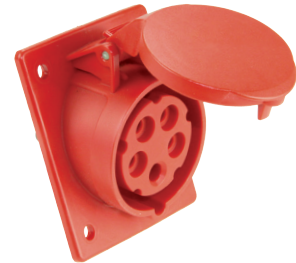
CEE socket outlet (i.e. 315-6f7)

Intermediate flange (810-00)

CEE Flanged Sockets Angled

230V~	400V~	500V~				
50/60Hz 3p=6h 4p+5p=9h	50/60Hz 3p=9h 4p+5p=6h	50Hz 7h 4p=7h	AMP	POLES	IP	Technical Pg.*
Cat.No.	Cat.No.	Cat.No.				
A413-6f8	A413-9f8	A413-7f8	16	3	44	37-A
A414-9f8	A414-6f8	A414-7f8	16	4	44	37-A
A415-9	A415-6	A415-7	16	5	44	37-A
A423-6	A423-9	A423-7	32	3	44/54	37-A
A424-9	A424-6	A424-7	32	4	44/54	37-A
A425-9	A425-6	A425-7	32	5	44/54	37-A
A4132-6f8	A4132-9f8	A4132-7f8	16	3	67	37-B
A4142-9f8	A4142-6f8	A4142-7f8	16	4	67	37-B
A4152-9f78	A4152-6f78	A4152-7f78	16	5	67	37-B
A4232-6f78	A4232-9f78	A4232-7f78	32	3	67	37-B
A4242-9f78	A4242-6f78	A4242-7f78	32	4	67	37-B
A4252-9f78	A4252-6f78	A4252-7f78	32	5	67	37-B
A43351-6	A43351-9	A43351-7	63	3	44	37-C
A43451-9	A43451-6	A43451-7	63	4	44	37-C
A43551-9	A43551-6	A43551-7	63	5	44	37-C
A4335-6	A4335-9	A4335-7	63	3	67	37-D
A4345-9	A4345-6	A4345-7	63	4	67	37-D
A4355-9	A4355-6	A4355-7	63	5	67	37-D
A4435-6	A4435-9	A4435-7	63	3	125	37-E
A4445-9	A4445-6	A4445-7	63	4	125	37-E
A4455-9	A4455-6	A4455-7	63	5	125	37-E

Flanged Socket
Angled
20°



flange 80 x 97 - fixing center 60 x 73

Flanged Socket
Angled
20°



flange 80 x 97 - fixing center 60 x 73

Flanged Socket
Angled 20°
Includes
"Pilot Contact"

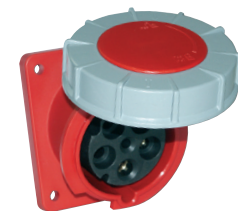
**POWER
TWIST**



flange 100 x 112 - fixing center 80 x 88

Flanged Socket
Angled 15°
Includes
"Pilot Contact"

**POWER
TWIST**



flange 100 x 112 - fixing center 80 x 88

Flanged Socket
Angled 15°
Includes
"Pilot Contact"

**POWER
TWIST**



flange 120 x 130 - fixing center 100 x 108



TEC