

CEE Wall Sockets Unswitched

230V~	400V~	500V~				
50/60Hz 3p=6h 4p+5p=9h	50/60Hz 3p=9h 4p+5p=6h	50Hz 7h 4p=7h	AMP	POLES	IP	Technical Pg.*
Cat.No.	Cat.No.	Cat.No.				
A113-6	A113-9	A113-7	16	3	44	43-A
A114-9	A114-6	A114-7	16	4	44	43-A
A115-9	A115-6	A115-7	16	5	44	43-A
A123-6	A123-9	A123-7	32	3	44	43-A
A124-9	A124-6	A124-7	32	4	44	43-A
A125-9	A125-6	A125-7	32	5	44	43-A
A1132-6	A1132-9	A1132-7	16	3	67	43-B
A1142-9	A1142-6	A1142-7	16	4	67	43-B
A1152-9	A1152-6	A1152-7	16	5	67	43-B
A1232-6	A1232-9	A1232-7	32	3	67	43-B
A1242-9	A1242-6	A1242-7	32	4	67	43-B
A1252-9	A1252-6	A1252-7	32	5	67	43-B
A75133-6	A75133-9	A75133-7	16	3	44	43-C
A75143-9	A75143-6	A75143-7	16	4	44	43-C
A75153-9	A75153-6	A75153-7	16	5	44	43-C
A75233-6	A75233-9	A75233-7	32	3	44	43-C
A75243-9	A75243-6	A75243-7	32	4	44	43-C
A75253-9	A75253-6	A75253-7	32	5	44	43-C
A751323-6	A751323-9	A751323-7	16	3	67	43-D
A751423-9	A751423-6	A751423-7	16	4	67	43-D
A751523-9	A751523-6	A751523-7	16	5	67	43-D
A752323-6	A752323-9	A752323-7	32	3	67	43-D
A752423-9	A752423-6	A752423-7	32	4	67	43-D
A752523-9	A752523-6	A752523-7	32	5	67	43-D

Wall Socket
15°



Wall Socket
15°



Socket Outlet
DIN 5 Module
with window



Socket Outlet
DIN 5 Module
with window



TEC

CEE Wall Sockets Unswitched

230V-

400V-

500V-

50/60Hz
3p=6h
4p+5p=9h

50/60Hz
3p=9h
4p+5p=6h

50Hz
7h
4p=7h

AMP.	POLES	IP	Technical Pg.*
63	3	66/67	44-A
63	4	66/67	44-A
63	5	66/67	44-A

Cat.No.
A1335-6
A1345-9
A1355-9

Cat.No.
A1335-9
A1345-6
A1355-6

Cat.No.
A1335-7
A1345-7
A1355-7



Wall Socket
Includes
"Pilot Contact"

POWER
TWIST

Basic unit HxWxD = 170x118x173; 1xM40; 2xM32 Entry

63	3	66/67	44-B
63	4	66/67	44-B
63	5	66/67	44-B

A13375-6
A13475-9
A13575-9

A13375-9
A13475-6
A13575-6

A13375-7
A13475-7
A13575-7



Wall Socket
Includes
"Pilot Contact"

POWER
TWIST

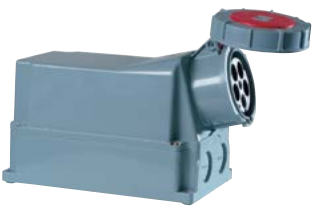
Basic unit HxWxD = 262x162x195; 1xM40; 2xØ40 Entry

125	3	66/67	44-C
125	4	66/67	44-C
125	5	66/67	44-C

A1435-6
A1445-9
A1455-9

A1435-9
A1445-6
A1455-6

A1435-7
A1445-7
A1455-7



Wall Socket
Includes
"Pilot Contact"

POWER
TWIST

Basic unit HxWxD = 262x162x205
3-pole: 1xØ50 & 2xØ40 Entry
4- & 5-pole: 1xM63 & 2xØ40 Entry

Advantages:

Housing can be rotated by 180° - the position of the cable entry can be chosen!

